

**ORC3L Antibody (monoclonal) (M01)****Mouse monoclonal antibody raised against a partial recombinant ORC3L.****Catalog # AT3153a****Specification**

---

**ORC3L Antibody (monoclonal) (M01) - Product Information**

Application	E
Primary Accession	<a href="#">O9UBD5</a>
Other Accession	<a href="#">BC035494</a>
Reactivity	Human
Host	mouse
Clonality	Monoclonal
Isotype	IgG2a Kappa
Calculated MW	82254

**ORC3L Antibody (monoclonal) (M01) - Additional Information****Gene ID** 23595**Other Names**

Origin recognition complex subunit 3, Origin recognition complex subunit Latheo, ORC3, LATHEO, ORC3L

**Target/Specificity**

ORC3L (AAH35494, 602 a.a. ~ 711 a.a) partial recombinant protein with GST tag. MW of the GST tag alone is 26 KDa.

**Dilution**

E~~N/A

**Format**

Clear, colorless solution in phosphate buffered saline, pH 7.2 .

**Storage**

Store at -20°C or lower. Aliquot to avoid repeated freezing and thawing.

**Precautions**

ORC3L Antibody (monoclonal) (M01) is for research use only and not for use in diagnostic or therapeutic procedures.

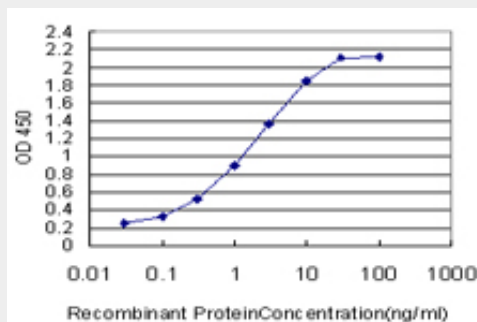
**ORC3L Antibody (monoclonal) (M01) - Protocols**

Provided below are standard protocols that you may find useful for product applications.

- [Western Blot](#)
- [Blocking Peptides](#)
- [Dot Blot](#)

- [Immunohistochemistry](#)
- [Immunofluorescence](#)
- [Immunoprecipitation](#)
- [Flow Cytometry](#)
- [Cell Culture](#)

### ORC3L Antibody (monoclonal) (M01) - Images



Detection limit for recombinant GST tagged ORC3L is approximately 0.03ng/ml as a capture antibody.

### ORC3L Antibody (monoclonal) (M01) - Background

The origin recognition complex (ORC) is a highly conserved six subunits protein complex essential for the initiation of the DNA replication in eukaryotic cells. Studies in yeast demonstrated that ORC binds specifically to origins of replication and serves as a platform for the assembly of additional initiation factors such as Cdc6 and Mcm proteins. The protein encoded by this gene is a subunit of the ORC complex. Studies of a similar gene in *Drosophila* suggested a possible role of this protein in neuronal proliferation and olfactory memory. Alternatively spliced transcript variants encoding distinct isoforms have been reported for this gene.

### ORC3L Antibody (monoclonal) (M01) - References

Genetic variants in apoptosis and immunoregulation-related genes are associated with risk of chronic lymphocytic leukemia. Enjuanes A, et al. *Cancer Res*, 2008 Dec 15. PMID 19074885. Involvement of human ORC and TRF2 in pre-replication complex assembly at telomeres. Tatsumi Y, et al. *Genes Cells*, 2008 Oct. PMID 18761675. The genetics of symptom-based phenotypes: toward a molecular classification of schizophrenia. DeRosse P, et al. *Schizophr Bull*, 2008 Nov. PMID 18628273. ATP-dependent assembly of the human origin recognition complex. Siddiqui K, et al. *J Biol Chem*, 2007 Nov 2. PMID 17716973. ATM and ATR substrate analysis reveals extensive protein networks responsive to DNA damage. Matsuoka S, et al. *Science*, 2007 May 25. PMID 17525332.